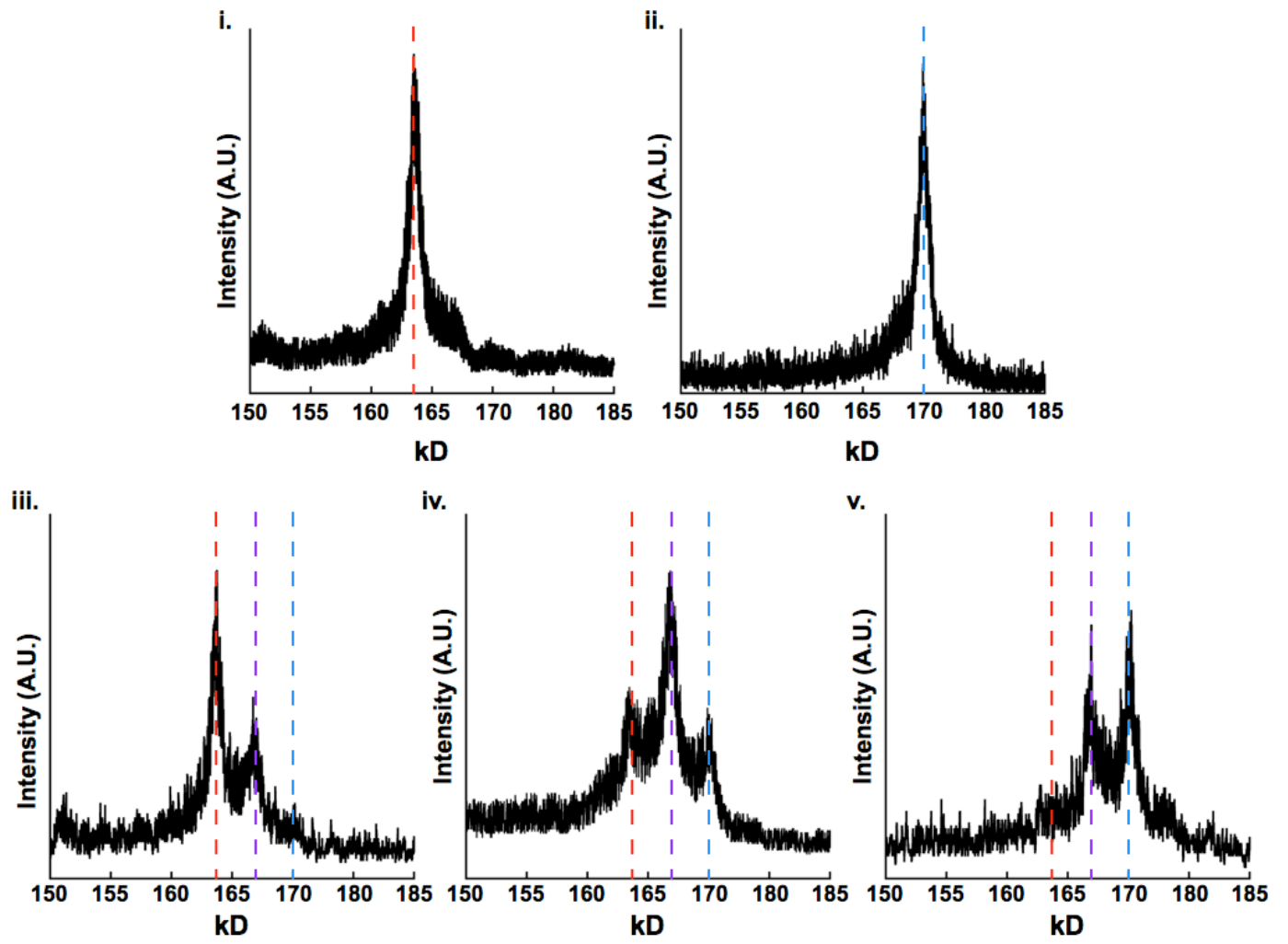


Supplementary Figure 1: Mass spectrometry confirmation of heterodimer formation in solution Panels i and ii show the 6kD difference between the untagged and the tagged homodimers, respectively. When the two homodimers are mixed 1:1 both homodimers as well as a third peak in the middle representing heterodimer are observed (panel iv). If there is three times the amount of untagged protein compared to tagged, two peaks are seen representing the homodimer in excess and the heterodimer (panel iii). This process can be reversed if the tagged homodimer is added in excess (panel v).

Supplementary Figure 2: Correlating measured activity with the presence of heterodimers A constant amount of WT Hsc82 was mixed with varying amounts of the catalytically dead, E33A. Activities were measured of the mixed species and compared to their homodimeric counterparts. The percent heterodimer and homodimer in solution was calculated with Berkeley Madonna using the starting concentrations of each reaction.

Supplementary 1



Supplementary 2

